



TRI-STATE ENGINEERING

Professional Engineers & Land Surveyors

702 SOUTH MAIN - JOPLIN, MO 64801
403 W. FIRST ST., STE. 300 - CLAREMORE, OK 74017
P.O. BOX 1867 - JOPLIN, MO 64802
PH. 417-781-0643 - FAX 417-781-4714
TOLL FREE 1-866-781-0643

PROJECT: St. Louis Avenue Widening

CUSTOMER: City of Joplin

JOB: 12147 CHKD

DWN.: DVH DATE: 9/23/15

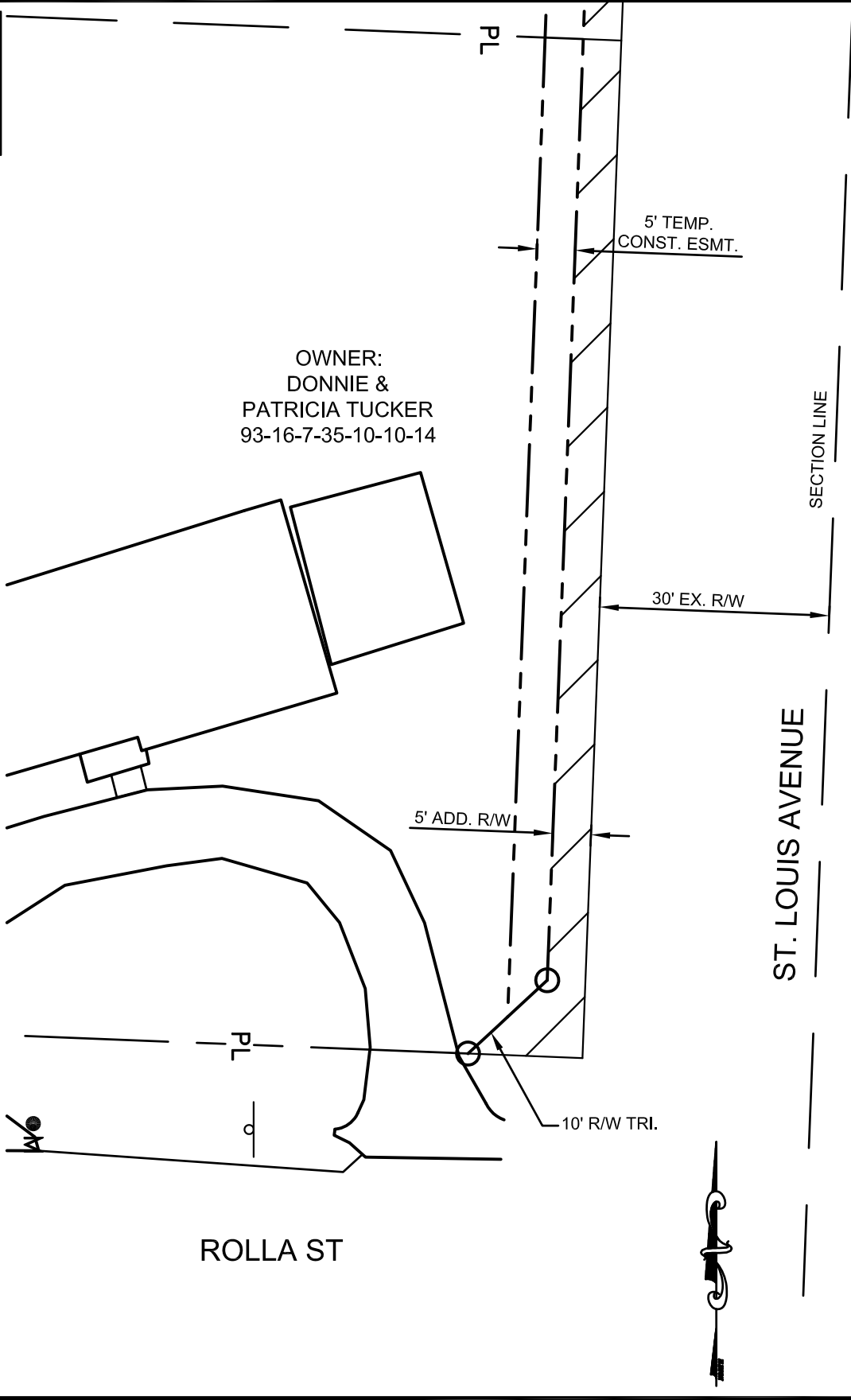
www.tristate-engineering.com Copyright 2015, Tri-State Engineering, Inc.

FILE: StLouisCivil3DExhibits

SCALE: 1" = 20'

REV.:

MISSOURI ENGINEERING CERTIFICATE OF AUTHORIZATION NUMBER 000530, EXPIRATION DATE DEC. 31, 2016



OWNER:
DONNIE &
PATRICIA TUCKER
93-16-7-35-10-10-14

ROLLA ST

ST. LOUIS AVENUE

SECTION LINE