

IMPACT 2015

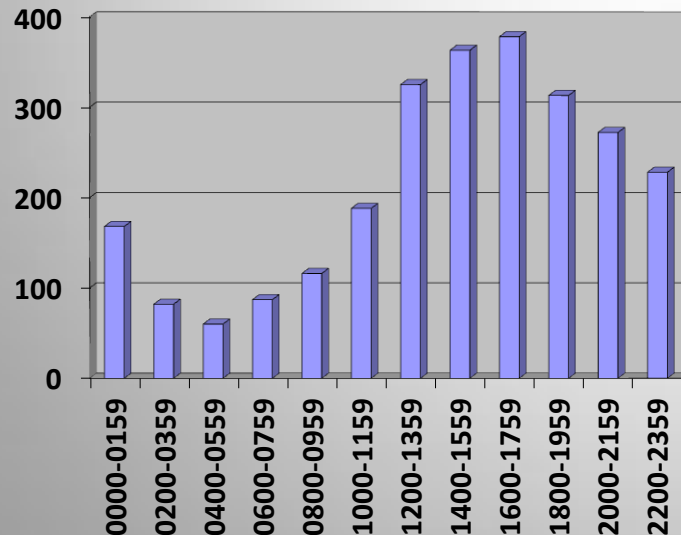
Crime	2015	2014	% Change
Assault	355	387	-8%
Homicide	3	4	-25%
Rape	22	29	-24%
Robbery	80	60	+33%
Total Violent Crime	460	480	-4%
Arson	33	17	+94%
Burglary	475	565	-16%
Larceny	1,984	2,119	-6%
Theft From Vehicle	656	749	-12%
Vandalism	566	671	-16%
Vehicle Theft	318	293	+9%
Total Property Crime	4,032	4,414	-9%
Total All Crime	4,492	4,894	-8%

Totals for ALL Crimes Reported in 2015

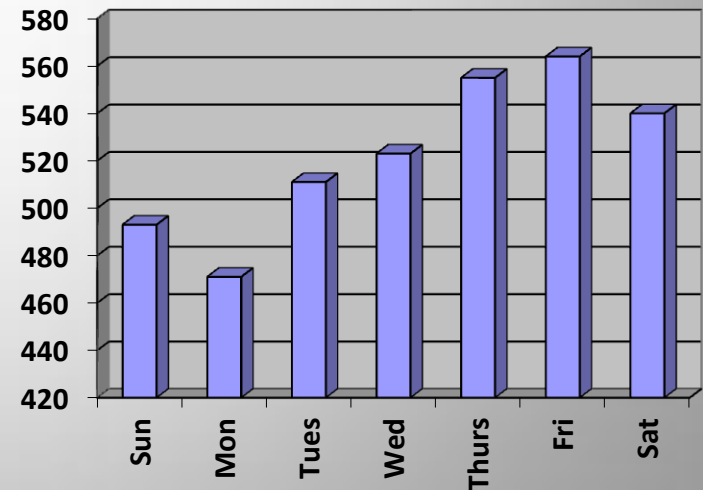
	101	201	301	401	501	Total
Raw Number	1,206	852	951	555	928	4,492
Percent	27%	19%	21%	12%	21%	100%

- Beat 101 had the most crime in 2015
- 1600-1800 hours had the most activity overall
- Friday was the most common day for crime

Times



Days



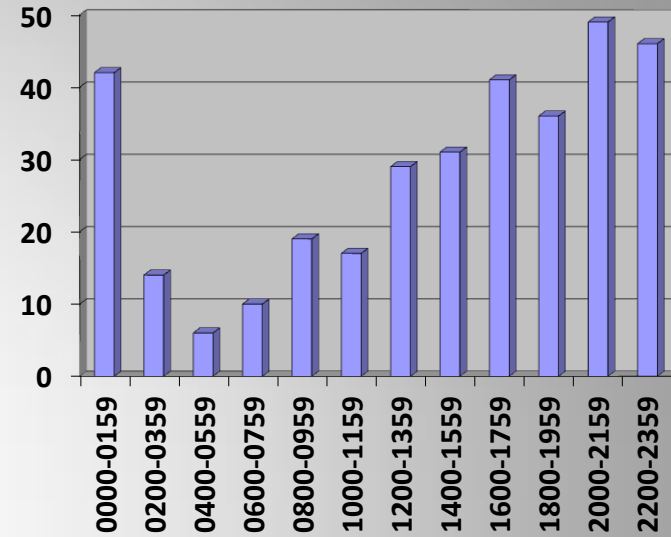
Calls For Service 2015

Month	2015	2014	% Change
January	6,726	7,230	-7%
February	6,009	6,821	-12%
March	6,948	7,964	-13%
April	6,883	7,256	-5%
May	7,175	7,794	-8%
June	7,212	7,774	-7%
July	7,758	7,214	+8%
August	7,802	7,728	+1%
September	7,158	7,486	-4%
October	7,432	7,834	-5%
November	6,467	6,780	-5%
December	6,866	7,374	-7%
Total	84,436	89,255	-5%

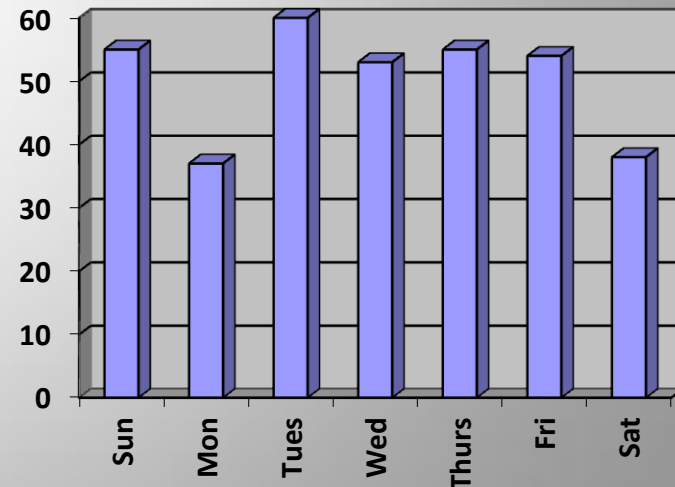
Assaults 2015

Assaults	101	201	301	401	501	Total
Commercial	28	20	37	23	29	137
Residential	25	22	15	11	45	118
Street	20	16	9	11	44	100
Acquaintance	54	39	43	25	92	253
On an Officer	5	2	4	5	4	20
Unknown	7	20	15	17	23	82
Hands, Feet, Fists	58	52	47	38	108	303
Weapon Used						
•Gun	3		4		2	9
•Knife	3	7	1	3	2	16
•Other	5	2	6	4	10	27
Degree						
•1 st	6	3	6	3	3	21
•2 nd	4	11	6	7	30	58
•3 rd	59	43	47	33	94	276
Total All Assaults	73	58	61	45	118	355

Times



Days



Assaults 2015

- 33% in beat 501
- 39% commercial
33% residential
28% street
- 71% acquaintance
6% on an officer
23% unknown
- 85% hands, feet, fist
15% weapon
- 6% 1st degree
16% 2nd degree
78% 3rd degree
- most common time
between 2000-2200 hours
- Tuesday most occurrences

Homicides 2015

Homicides	101	201	301	401	501	Total
Commercial						
Hotel/Motel						
Residential	1	1		1		3
Street						
Unknown						

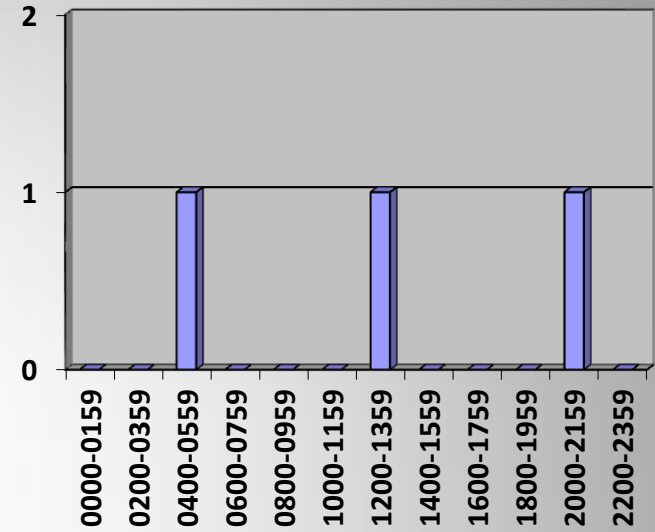
Acquaintance	1	1		1		3
Unknown						

Hands, Feet, Fists						
Weapon Used •Gun •Knife •Other	1	1		1		3

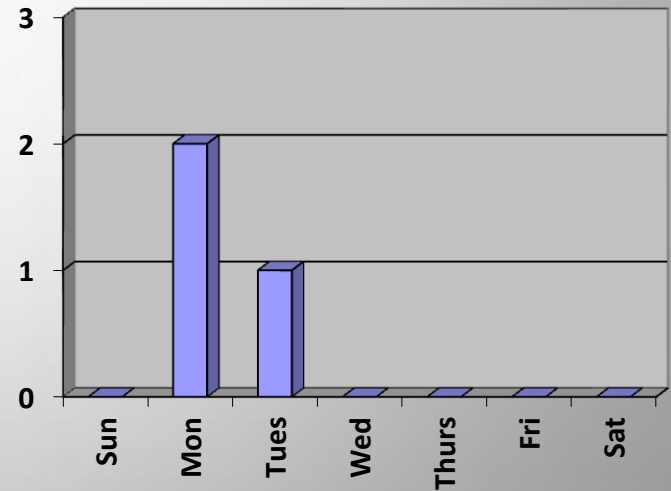
Degree •1 st •2 nd	1	1		1		1 2
--	---	---	--	---	--	--------

Total All Homicides	1	1		1		3
---------------------	---	---	--	---	--	---

Times



Days



Rapes 2015

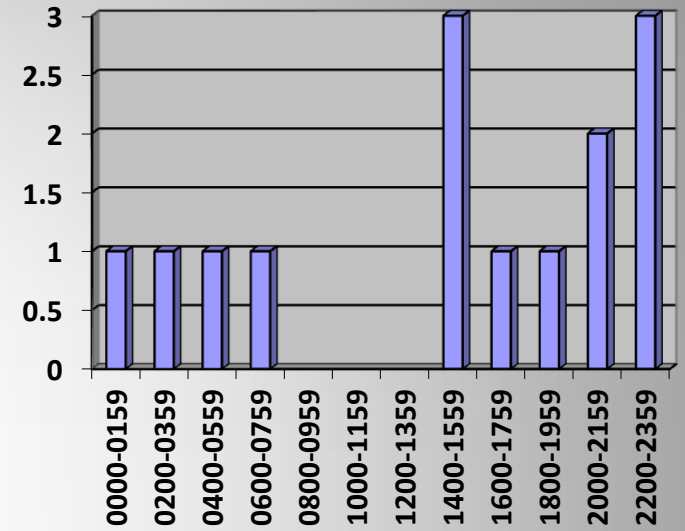
Rapes	101	201	301	401	501	Total
Hotel/Motel			4			4
Residential	2	1	4	1	10	18
Other						
Unknown						

Acquaintance	2	1	5	1	10	19
Unknown			3			3

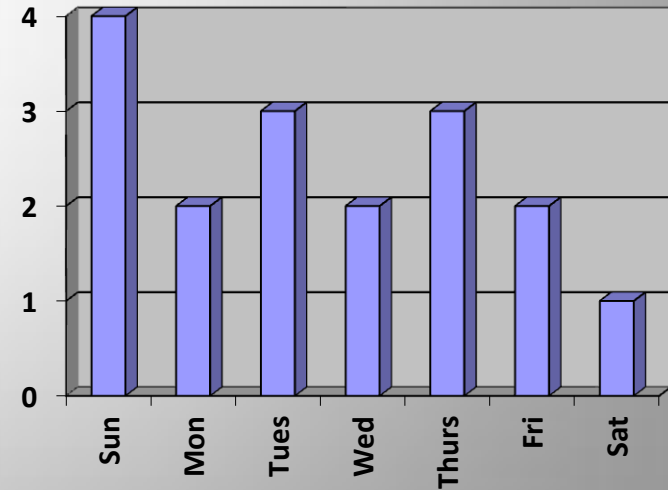
Type	101	201	301	401	501	Total
•Rape	1	1	7	1	9	19
•Sexual Assault	1		1		1	3
•Unknown						

Total All Rapes	2	1	8	1	10	22
-----------------	---	---	---	---	----	----

Times



Days



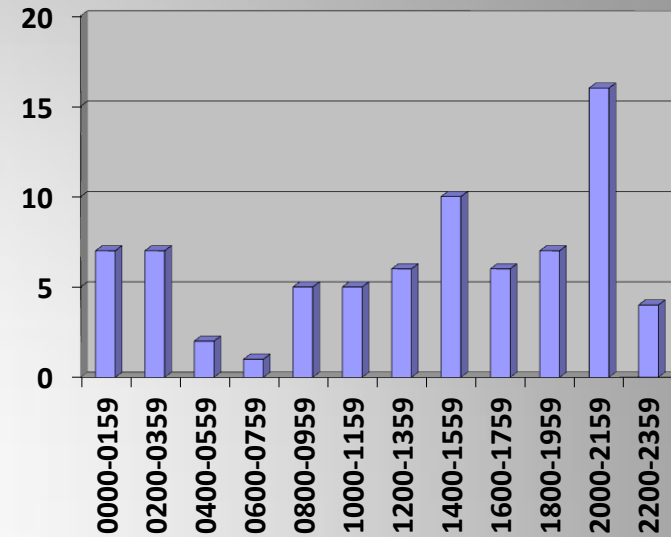
Rapes 2015

- 18% hotel/motel
82% residential
- 86% acquaintance
14% unknown
- most common times
between 1400-1559
and 2200-0200 hrs.
- Sunday most
occurrences

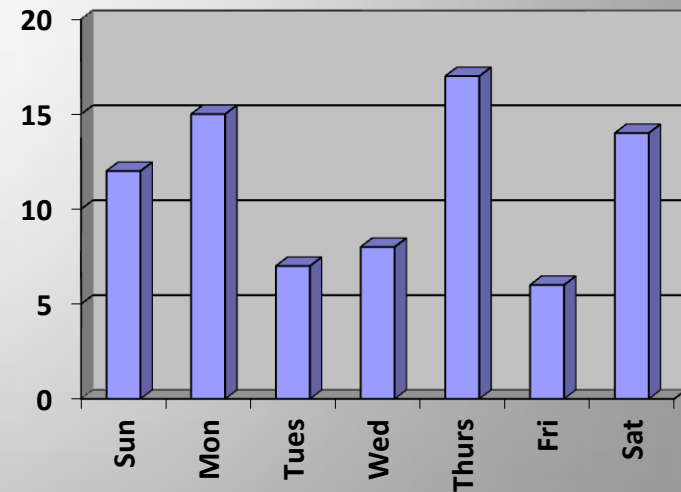
Robberies 2015

Robberies	101	201	301	401	501	Total
Commercial	5	4	4	2	1	16
Individual	19	13	12	4	16	64
No Weapon	16	9	5	3	11	44
Weapon Used						
•Gun	5	2	9		1	17
•Knife	2	1	3	4	3	13
•Other		2	1	1	2	6
Degree						
•1 st	7	8	11	4	6	36
•2 nd	17	9	5	2	11	44
Total All Robberies	24	17	16	6	17	80

Times



Days



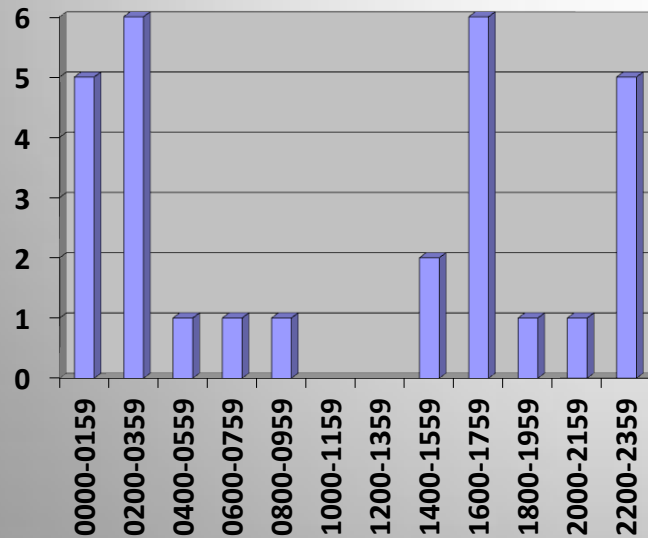
Robberies 2015

- 30% in beat 101
- 20% commercial
80% individual
- 55% no weapon
45% weapon
- 45% – 1st degree
55% – 2nd degree
- most common time
between 2000-2159
hours
- Thursday most occurrences

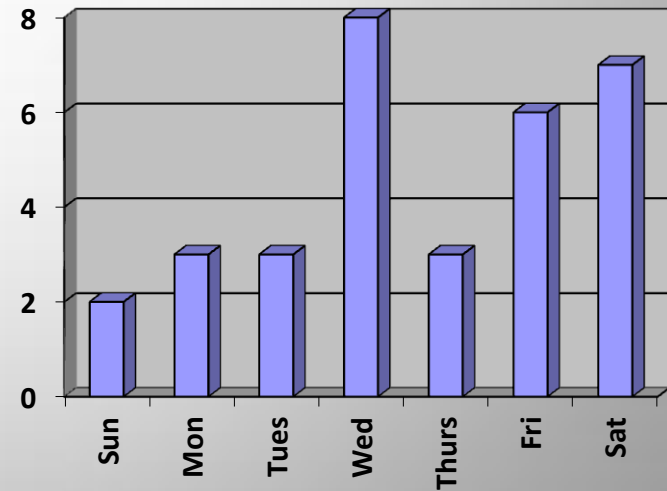
Arsons 2015

Arsons	101	201	301	401	501	Total
Commercial		1		1	3	5
Dumpster					4	4
Residential						
•Vacant			1	2	3	6
•Lived In		1		3	4	8
Vehicle	1			2	3	6
Other				1	3	4
Total All Arsons	1	2	1	9	20	33

Times



Days



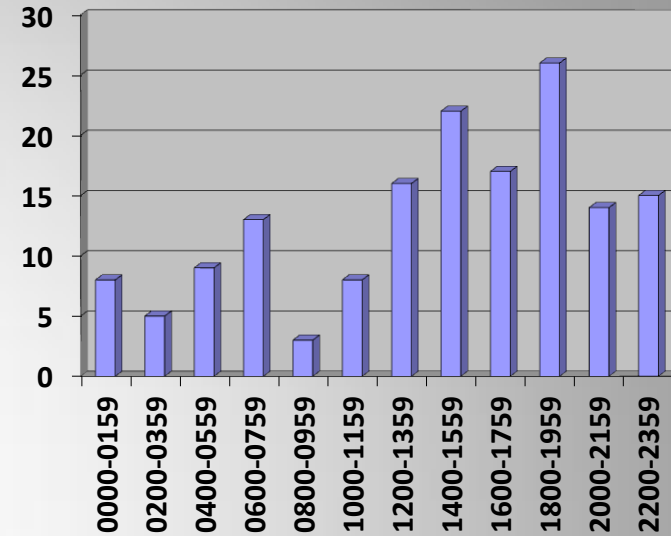
Arsons 2015

- 61% in beat 501
- 15% commercial
 - 12% dumpster
 - 18% vacant residence
 - 24% lived in residence
 - 18% vehicle
 - 12% other
- most common times between 0200-0359 and 1600-1759 hours
- Wednesday most occurrences

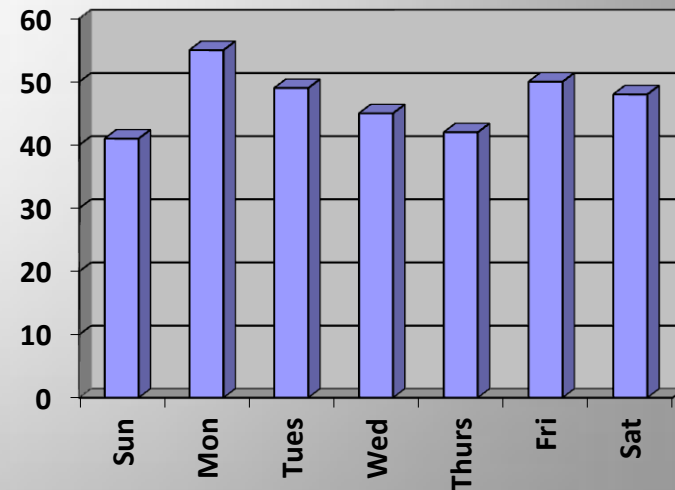
Burglaries	101	201	301	401	501	Total
Commercial	13	16	12	8	25	74
Residential	96	89	46	63	107	401
Degree						
•1 st	23	11	10	11	20	75
•2 nd	88	93	46	61	112	400
Door	88	68	40	56	92	344
Window	13	25	7	8	24	77
Unknown	14	12	10	7	11	54
Locked	73	58	30	45	80	286
Unlocked	24	22	10	17	33	106
Unknown	15	23	17	9	19	83
Items Stolen						
•Cash/Checks	25	10	11	6	22	74
•Copper	1	10	5		6	22
•Electronics	37	32	17	28	38	152
•Guns	5	6	3	5	5	24
•Jewelry	12	6	2	3	9	32
•Medicine	7	2	2	5	6	22
•Tools	13	12	6	14	14	59
•Other	13	19	6	11	19	68
Total All Burglaries	109	105	58	71	132	475

Burglaries 2015

Times



Days



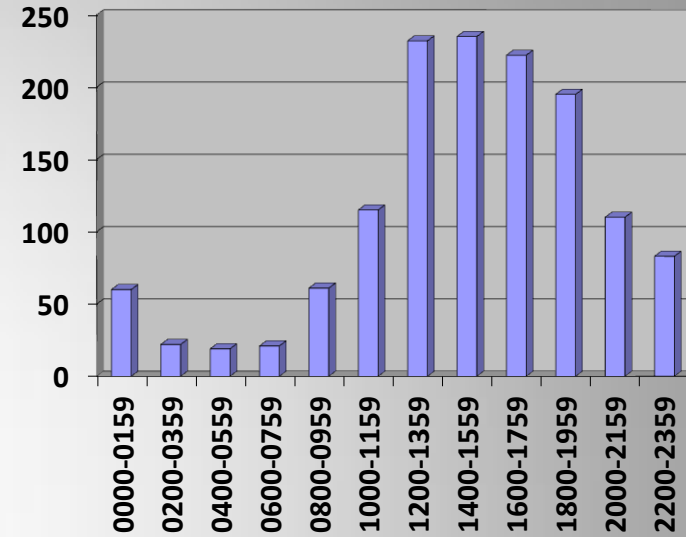
Burglaries 2015

- 28% in beat 501
- 16% commercial
84% residential
- 16% 1st degree
84% 2nd degree
- 72% door entry
16% window entry
- 60% locked
22% unlocked
17% unknown
- three most frequently taken items: electronics (32%), cash/checks/cards (16%), tools (12%)
- most common time between 1800-2000 hours
- Monday most occurrences

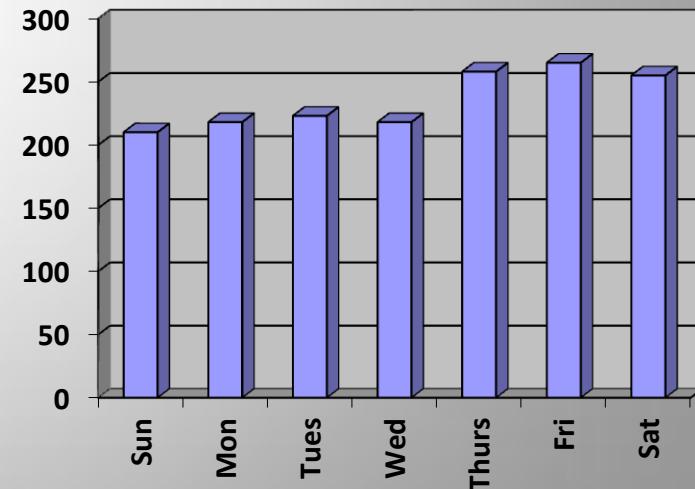
Larcenies 2015

Larcenies	101	201	301	401	501	Total
Commercial	114	93	158	61	100	526
Residential	126	116	55	68	181	546
Shoplifting	362	193	282	44	31	912
Items Stolen						
•Alcohol	13	11	28	15	9	76
•Bicycle	8	18	7	12	27	72
•Cab Fare	1			2	1	4
•Cash/Checks	54	58	49	29	54	244
•Clothing	95	44	93	5	10	247
•Copper	11	4	16	6	12	49
•Electronics	68	86	91	21	60	326
•Food	21	47	89	17	12	186
•Gasoline	1	1	9	2		13
•Guns	2	3	6	2	1	14
•Jewelry	58	10	14	2	7	91
•Lawnmower	9	6	3	1	6	25
•Medicine	21	23	11	8	27	90
•Purse/wallet	34	18	31	20	18	121
•Tools	19	18	17	5	11	70
•Other	110	72	96	29	61	368
Total All Larcenies	602	402	495	173	312	1984

Times



Days



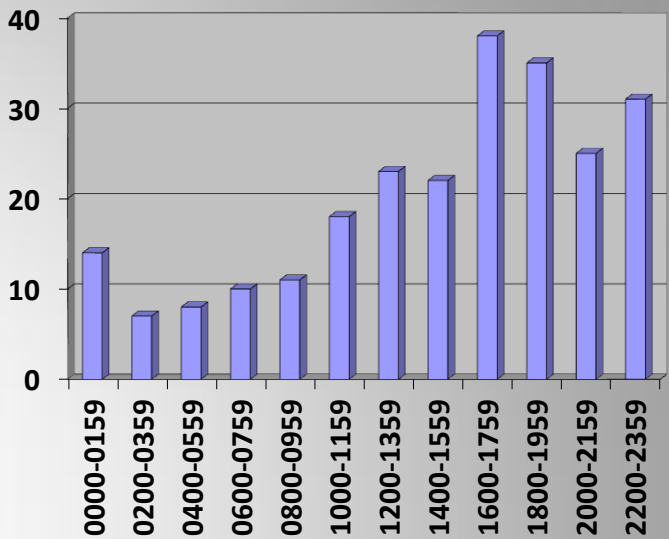
Larcenies 2015

- 30% in beat 101
- 27% commercial
28% residential
46% shoplifting
- copper/ac thefts
decreased to 49
from 115 in 2014
- most common time
between 1200-1600
hours
- Friday most
occurrences
- most frequently
stolen items:
electronics (16%)
clothing (12%)
cash/checks (12%)
food (9%)

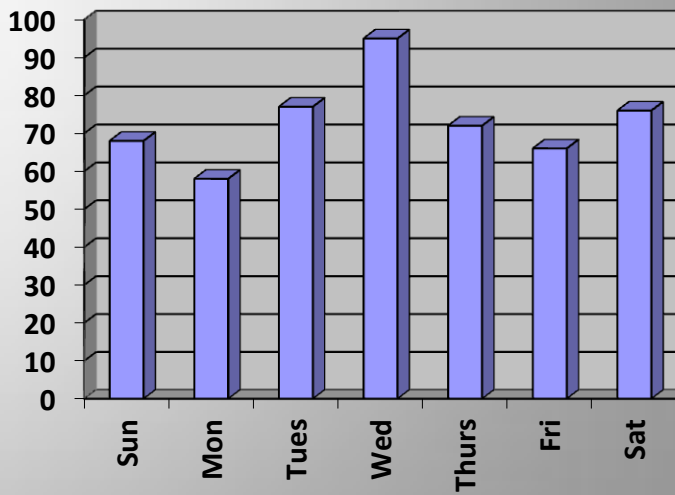
Thefts From Vehicles	101	201	301	401	501	Total
Driveway	51	41	22	45	22	181
Parking Lot	98	50	96	54	48	346
Street	12	19	6	18	26	81
Unknown	10	11	6	9	12	48
Forced	46	20	27	29	10	132
License Plate or Other Car Part	23	27	28	25	33	136
Unlocked	73	51	60	51	39	274
Unknown	30	24	25	17	18	114
Items Stolen						
•Cash/Checks	22	21	23	20	7	93
•Electronics	35	30	31	36	12	144
•Guns	7	4	6	2	4	23
•Medicine	6	5	6	7	5	29
•Purse/Wallet	56	28	33	45	16	178
•Tools	9	7	7	5	9	37
•Other	28	11	24	12	18	93
Total All Thefts From Vehicles	171	121	130	126	108	656

Thefts From Vehicles 2015

Times



Days



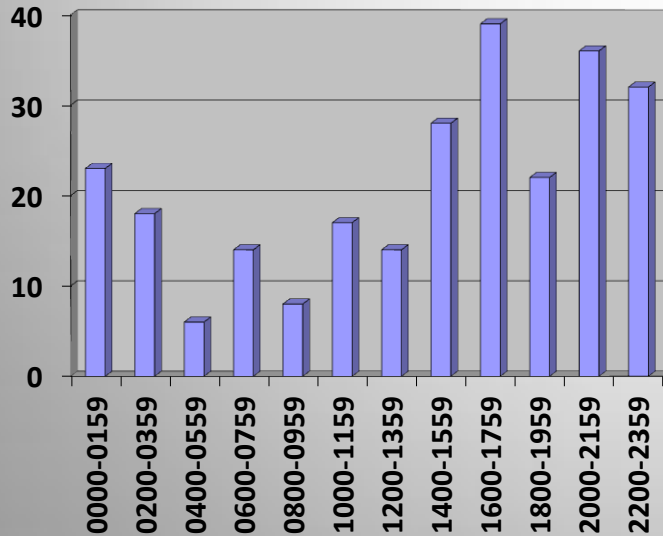
Thefts From Vehicles 2015

- 26% in beat 101
- 28% driveway
 - 53% parking lot
 - 12% street
 - 7% unknown
- 20% forced
 - 21% license plate/car part
 - 42% unlocked
 - 17% unknown
- most frequently taken items:
 - purse/wallet (27%)
 - electronics (22%)
 - cash/checks (14%)
- most common time between 1600-1800 hours
- Wednesday most occurrences

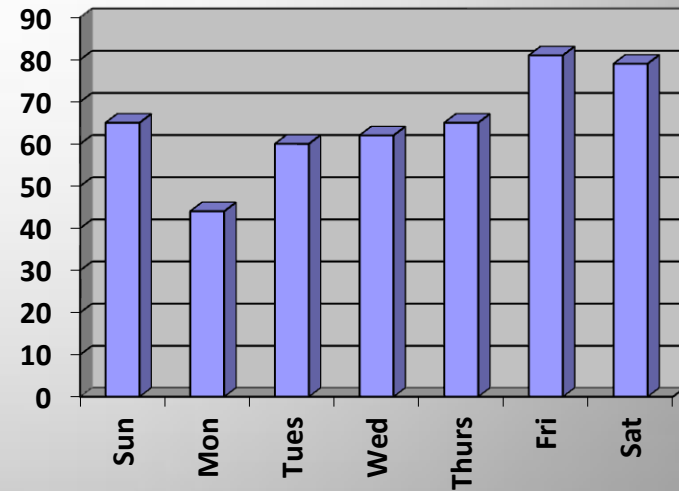
Vandalisms 2015

Vandalisms	101	201	301	401	501	Total
Commercial	27	16	35	14	41	133
Residential	33	28	15	13	51	140
Vehicle	83	43	56	48	63	293
Total All Vandalisms	143	87	106	75	155	566

Times



Days



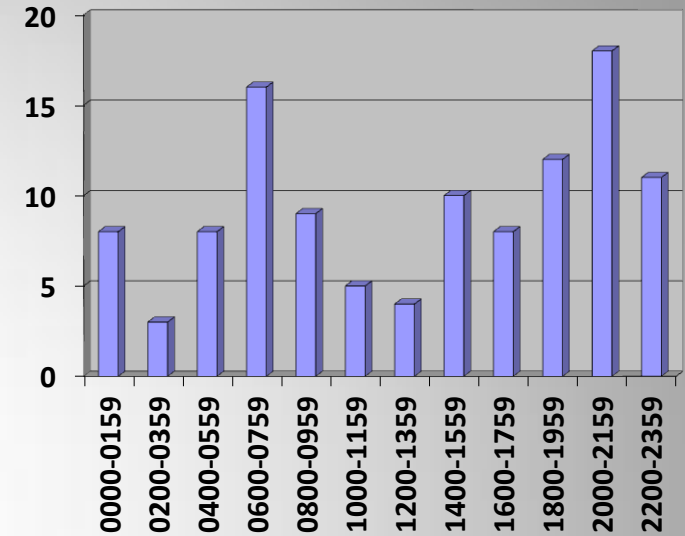
Vandalisms 2015

- 27% in beats 101 & 501
- 23% commercial
25% residential
52% vehicle
- most common time
between 1600-1800 hrs.
- Friday most occurrences

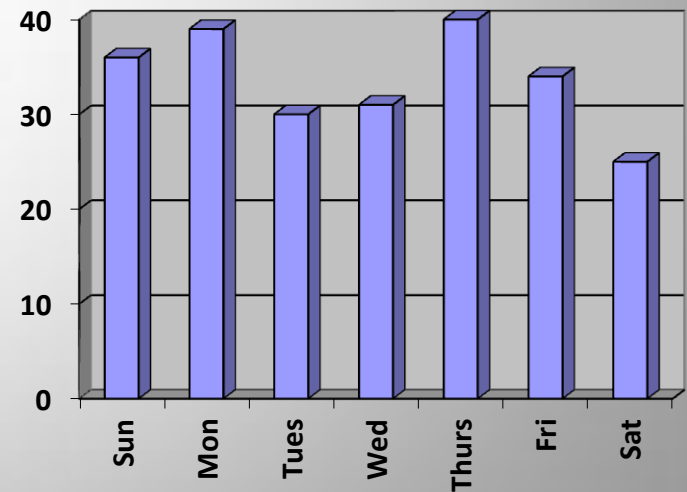
Vehicle Thefts	101	201	301	401	501	Total
Driveway	35	23	12	26	33	129
Loaned or Rented/Not Returned	12	5	5	1	11	34
Parking Lot	32	23	40	10	25	130
Street	3	6	1	3	12	25
Loaned or Rented/Not Returned	12	5	5	1	11	34
Locked	3	2	8	2	11	26
Motorcycle, Scooter, or Trailer	31	18	16	11	13	89
Unlocked	14	17	14	8	14	67
Unknown	23	12	23	12	32	102
Keys in Vehicle	14	12	13	10	15	64
Recovered	25	15	12	10	31	93
Total All Vehicle Thefts	82	57	58	40	81	318

Vehicle Thefts 2015

Times



Days



Vehicle Thefts 2015

- 26% from beat 101, and 25% from beat 501
- 41% driveway
11% loaned or rented or not returned
41% parking lot
8% street
- 8% locked
28% motorcycle/scooter or trailer
21% unlocked
32% unknown
- keys left in vehicle 20% of the time
- 29% recovered
- most common time between 2000-2159 hours (with 0600-0759 a close second)
- Thursday most occurrences

2015 Traffic Accidents – 1,775 Total

(9.5% increase over last year's total)

Traffic Crashes, 2013 - 2015



	Jan	Feb	Jan	Apr	May	Jun	Jul	Aug	Sep	Oct	Nov	Dec
— 2013	139	123	154	136	147	152	145	152	160	169	138	147
— 2014	126	108	128	127	151	118	156	151	150	133	124	149
— 2015	116	118	129	127	153	143	133	166	178	191	161	160