

Joplin & Jasper County

Communicable Diseases

Newsletter
January-March 2018

Pneumococcal Disease

Streptococcus pneumoniae, or pneumococcus, is a type of bacterium that causes pneumococcal [noo-muh-KOK-uhl] disease. Pneumococcal infections can range from ear and sinus infections to pneumonia and bloodstream infections. Children younger than 2 years old and adults 65 years or older are among those most at risk for disease. There are vaccines to prevent pneumococcal disease in children and adults.

Contact Us:

Joplin City Health Department
321 E 4th Street
Joplin, MO 64801
Phone: 417-623-6122
Fax: 417-624-6453

www.joplinhealthdepartment.org

Like us on Facebook:

<https://www.facebook.com/joplinhealthdepartment/>

Jasper County Health Department
105 Lincoln Street
Carthage, MO 64836
Phone: 417-358-3111
Toll-Free: 1-877-879-9131

<http://health.jaspercounty.org/>

Like Us on Facebook:

<https://www.facebook.com/JasperCountyHealthDept>

For comments or questions, please contact:
Jillian Pollard, Community Health Planner/Educator
Regional Epidemiologist
jpollard@joplinmo.org
Office: 417-623-6122

IN THIS ISSUE

- Pneumococcal Disease
- Sexually Transmitted Disease
- Communicable Diseases Report
- Influenza Report

There are many types of pneumococcal disease. Symptoms and complications depend on the part of the body that is infected.

Pneumococcal **pneumonia** (lung infection) is the most common serious form of pneumococcal disease. Symptoms include:

- Fever and chills
- Cough
- Rapid breathing or difficulty breathing
- Chest pain

Older adults with pneumococcal pneumonia may experience confusion or low alertness, rather than the more common symptoms listed above.

Pneumococcal **meningitis** is an infection of the tissue covering the brain and spinal cord. Symptoms include:

- Stiff neck
- Fever
- Headache
- Photophobia (eyes being more sensitive to light)
- Confusion

In babies, meningitis may cause poor eating and drinking, low alertness, and vomiting.

Pneumococcal **bacteremia** is a blood infection. Symptoms include:

- Fever
- Chills
- Low alertness

Sepsis is a complication caused by the body's overwhelming and life-threatening response to an infection, which can lead to tissue damage, organ failure, and death. Symptoms include:

- Confusion or disorientation
- Shortness of breath
- High heart rate
- Fever, shivering, or feeling very cold
- Extreme pain or discomfort
- Clammy or sweaty skin

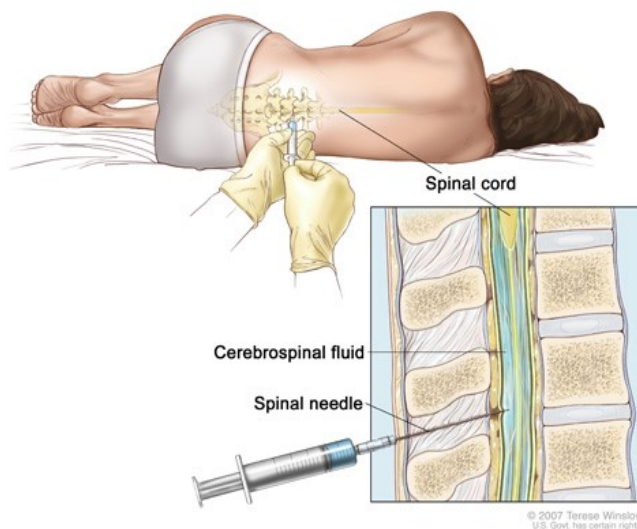
Pneumococcus bacteria cause up to half of **middle ear infections** (otitis media). Symptoms include:

- Ear pain
- A red, swollen ear drum
- Fever
- Sleepiness

Diagnosis

Early diagnosis and treatment are very important for invasive pneumococcal disease. It is important to know if it is pneumococcal disease because the treatment will change depending on the cause. In the case of pneumococcal disease, antibiotics can help prevent severe illness.

If doctors suspect **invasive pneumococcal disease**, like meningitis or bloodstream infections, they collect samples of cerebrospinal fluid or blood and send them to a laboratory for testing.



For **non-invasive pneumococcal pneumonia** in adults, there is also a urine test that can help to make the diagnosis. For other pneumococcal infections, like ear and sinus infections, healthcare professionals usually diagnose them based on a history and physical exam findings that support pneumococcal infection.

Prevention

The best way to prevent pneumococcal disease is to get the vaccine(s).

Pneumococcal vaccines help protect against some of the more than 90 types of pneumococcal bacteria.

Communicable Diseases Reported Joplin City/Jasper County 2017 and 2018 (January 1-March 31)				
	Joplin City		Jasper County	
	2017	2018	2017	2018
Anaplasma Phagocytophilum	0	0	0	0
Campylobacteriosis	5	0	3	9
Coccidioidomycosis	0	0	0	0
Cryptosporidiosis	0	0	1	3
E. Coli Shiga Toxin Positive	0	0	0	2
E. Coli O157 H7	0	0	1	3
Ehrlichia Chaffeensis	1	0	1	0
Giardiasis	0	1	0	1
Haemophilus Influenzae, Invasive	0	0	1	0
Hemolytic Uremic Syndrome	0	0	1	0
Hepatitis A Acute	0	0	1	0
Hepatitis B	4	2	2	1
Hepatitis B (Pregnancy) Prenatal	0	0	0	0
Hepatitis B Acute	1	0	1	1
Hepatitis B Chronic Infection	6	4	0	1
Hepatitis C	0	2	1	0
Hepatitis C Chronic Infection	21	13	12	16
Influenza (Deaths)	1	7	1	6
Legionellosis	0	1	1	0
Lyme	0	0	0	0
Meningococcal Disease	0	0	0	0
MOTT	4	7	1	0
Mumps	5	0	8	0
Pertussis	1	0	1	0
Rocky Mountain Spotted Fever	1	1	0	3
Salmonellosis	1	2	1	3
Shigellosis	1	0	0	0
Staph Aureus VISA	0	1	0	0
Strep Pneumoniae Invasive	2	10	3	4
TB Disease	1	1	0	0
TB Infection	9	12	5	3
Varicella	0	0	4	4
Total Cases Per Year	64	64	50	60

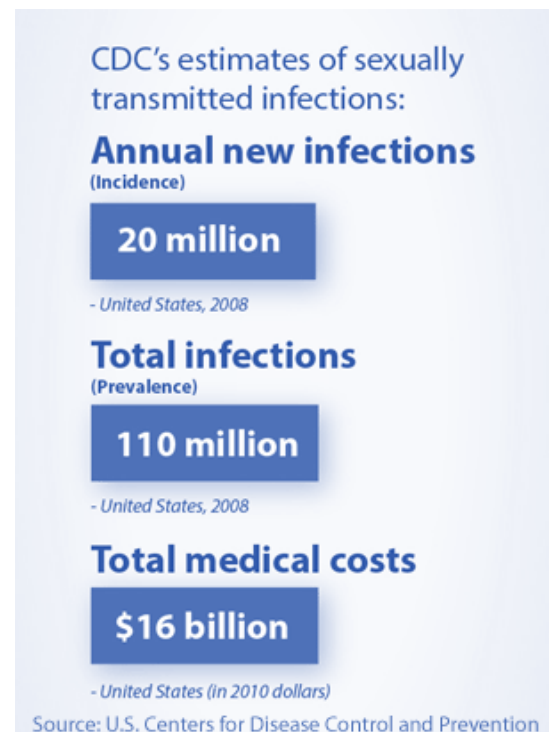
Key	
2018 more than 2017	
2018 less than 2017	

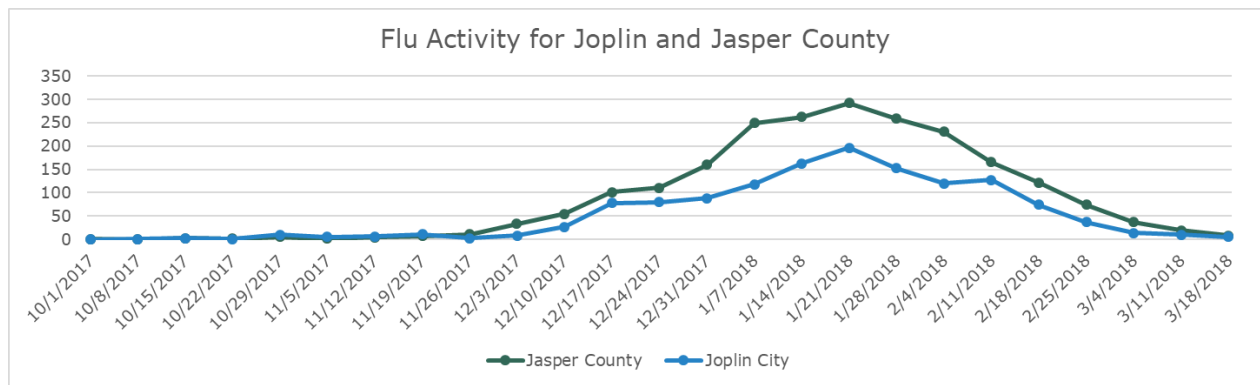
Source: DHSS

Sexually Transmitted Diseases Jasper County Jan-Feb 2018	
	2018
Chlamydia	100
Gonorrhea	56
Syphilis	2
Total	158

According to the data, Jasper County has seen a total of 158 sexually transmitted disease cases in January and February. The majority of STD cases seen were positive for Chlamydia, followed by Gonorrhea and Syphilis respectively. Data for STD count is tracked by the Missouri Department of Health and Senior Services and is subject to change as reports are collected.

Source: DHSS





*Source: Joplin City/Jasper County HD Flu Surveillance, 2017-2018. Data is from week beginning October 1, 2017 to week beginning March 18, 2018. Data is preliminary and is subject to change.

Jasper County		
Type of Influenza	Season TD	% of Total
Influenza A	1422	64.2
Influenza B	790	35.7
Unknown/Untyped	0	0
Total	2212	100

Joplin City		
Type of Influenza	Season TD	% of Total
Influenza A	846	63.3
Influenza B	489	36.6
Unknown/Untyped	2	.1
Total	1337	100

Jasper County		
Age Group	Season TD	% of Total
0-1	152	6.9
2-4	228	10.3
5-14	729	33
15-24	151	6.8
25-49	402	18.2
50-64	326	14.3
65+	234	10.6
Total	2212	100

Joplin City		
Age Group	Season TD	% of Total
0-1	97	7.3
2-4	166	12.4
5-14	402	30.1
15-24	112	8.4
25-49	211	15.8
50-64	150	11.2
65+	199	14.9
Total	1337	100

The 2017-2018 flu season has seen significantly higher cases of influenza than last year's flu season. *To-date Joplin City (1337) and Jasper County (2212) have seen a combined total of 3,549 influenza cases. Both jurisdictions have seen more cases of Influenza A, hovering around 63%-64% of cases, while Influenza B made up 35%-36% of cases. These results are consistent with cases being seen across the state of Missouri. The majority of cases of influenza have been seen in the 5-14 age range followed by the 25-49 age group in both Joplin City and Jasper County.

The flu season is still not quite over yet. Influenza is tracked by the local and state health departments until mid-May. For this reason, it is still important to remember to practice good hand hygiene, avoid being around those who are sick, and to stay home if you are sick.

Analysis of cases reported was based on age, type of influenza, and jurisdiction.