

JOPLIN POLICE DEPARTMENT

HONOR • COURAGE • COMMITMENT • SERVICE

CHIEF OF POLICE  **SLOAN A. ROWLAND**

www.joplinpolice.org

2019 Annual Report



Released February 26, 2020

303 EAST 3RD ST • JOPLIN, MISSOURI • 417.623.3131

JOPLIN POLICE DEPARTMENT

HONOR • COURAGE • COMMITMENT • SERVICE

CHIEF OF POLICE  **SLOAN A. ROWLAND**

www.joplinpolice.org

Message from Chief Rowland



I would like to take a moment to sincerely thank the citizens of Joplin and the surrounding area who have shown support for our department in 2019. As the newly appointed Police Chief I have the awesome responsibility to lead the men and women who take great pride in their daily service to our citizens. Their professionalism continues to be a hallmark of this department.

Our department consists of more than 110 sworn and 53 non-sworn employees from the four bureaus as well as the Joplin City Jail and the Joplin Emergency Communications Center.

The Joplin Police Department is responsible for providing rapid response to emergencies, comprehensive investigations on criminal matters, traffic safety, community service, and assistance to the general public.

As you will see in the statistics provided in this report, 2019 was a very busy year for the department. Significant increases were seen in police calls for service, reports taken, self-initiated activity, and traffic stops.

The Joplin Police Department continues to try and overcome the recruiting and retention problems that are facing law enforcement nationwide. Recent changes made to pay, retirement, and recruiting have resulted in increased applicant numbers and is slowly closing the gap of officer shortages.

Our goal as a department is to respond to the community's needs in a professional manner with a customer service mentality guiding us. We are committed to working in a collaborative effort with the community to identify, address, and resolve quality of life issues with our focus directed toward long-term resolutions.

Sincerely

A handwritten signature in black ink that reads "Sloan A. Rowland". The signature is written in a cursive, flowing style.

Chief of Police

303 EAST 3RD ST • JOPLIN, MISSOURI • 417.623.3131

JOPLIN POLICE DEPARTMENT

HONOR • COURAGE • COMMITMENT • SERVICE

CHIEF OF POLICE  SLOAN A. ROWLAND

www.joplinpolice.org

2019 By the Numbers

Calls for Service **85,918**

Reports Taken **10,939**

Traffic Stops Conducted **13,909**

Traffic Crashes **1,973 (7 fatal)**

2019 CRIME STATISTICS			
	2018	2019	% Change
ASSAULT	434	456	5%
DOMESTIC ASSAULT	743	807	8%
UNLAWFUL USE/WEAPON	50	66	24%
HOMICIDE	3	2	-33%
SEX CRIMES	133	132	-1%
ROBBERY	53	64	17%
TOTAL VIOLENT CRIME	1,416	1,527	7%
ARSON	29	23	-21%
BURGLARY	547	527	-4%
LARCENY	1,960	2,136	8%
THEFT FROM VEHICLE	632	734	14%
VANDALISM	659	712	7%
VEHICLE THEFT	440	456	4%
TOTAL PROPERTY CRIME	4,267	4,588	7%
DUI/DWI	271	331	18%
NARCOTICS	1229	1333	8%
TOTAL DRUG/ALCOHOL CRIME	1,500	1,664	10%
TOTAL CRIME	7,183	7,779	8%

JOPLIN POLICE DEPARTMENT

HONOR • COURAGE • COMMITMENT • SERVICE

CHIEF OF POLICE  **SLOAN A. ROWLAND**

www.joplinpolice.org

Uniform Operations



The Uniform Operations Bureau is the largest bureau within the Joplin Police Department. When fully staffed the Patrol Division consists of five patrol teams, providing 24-hour police service to the citizens, businesses, and visitors within the City of Joplin. Weekly shift coverage is made up of five shifts: Days, 2 Days/2 Evenings, Evenings, 1 Evening/3 Midnights, and Midnights.

K-9 Unit

The K-9 program was established to supplement police operations by locating and apprehending criminal offenders, illegal narcotics and explosives. Because of a superior sense of smell, hearing, and potential aggressiveness, the trained law enforcement canine is a valuable supplement to law enforcement manpower.

Utilization of canines requires adherence to procedures that properly control their use of force potential and channel their specialized capabilities into legally acceptable crime prevention and control.



JOPLIN POLICE DEPARTMENT

HONOR • COURAGE • COMMITMENT • SERVICE

CHIEF OF POLICE  **SLOAN A. ROWLAND**

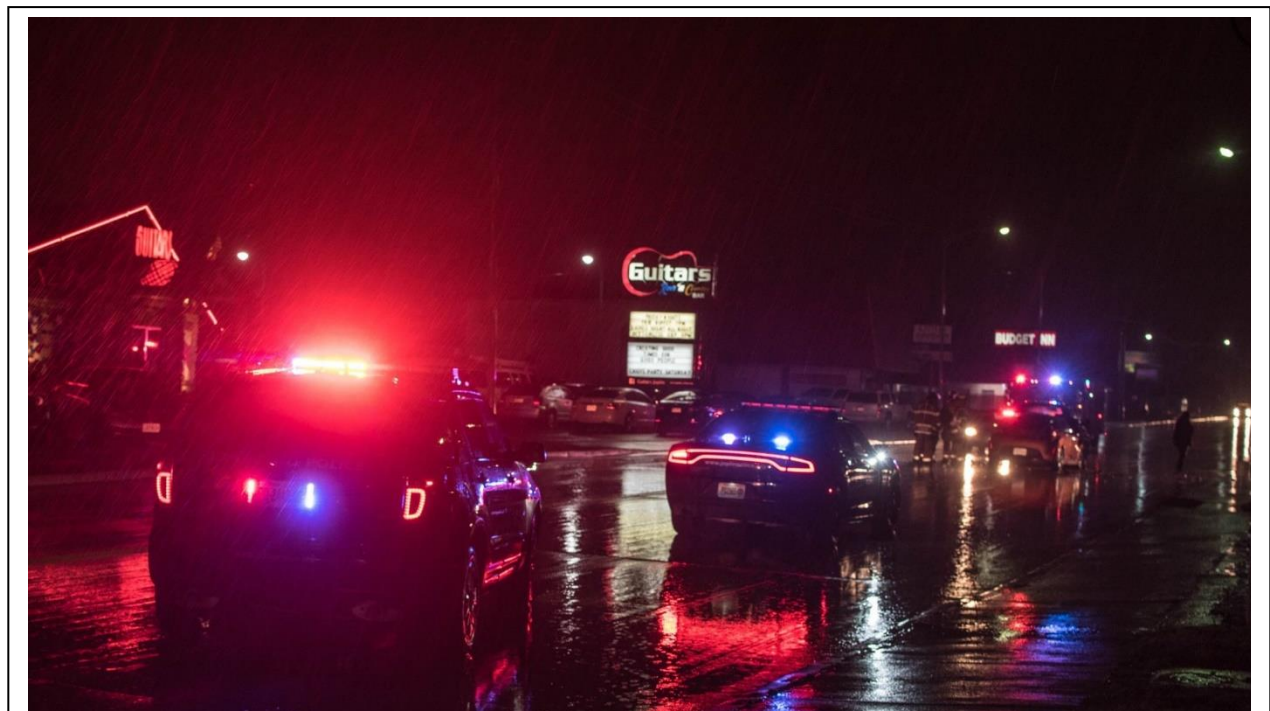
www.joplinpolice.org

Traffic Team

Another extremely important segment of Uniform Operations is the Traffic Division. The authorized strength of the Traffic Unit is 10 members, including a sergeant, a corporal, two full time DWI officers, and two motorcycle officers, the officers of the traffic team are constantly working toward crash reduction and making the streets safer in Joplin. The unit uses a data driven approach to allocate its resources in an effort to pinpoint the areas that need the most enforcement. The Traffic supervisor and members of the Traffic Team continue to develop innovative ways to enforce the traffic laws such as zero tolerance traffic details, the addition to the use of speed display trailers to measure speed in the area and increased Hazardous Moving Violation and DWI enforcement details. This unit also uses that data driven approach to resolve neighborhood speeding problems and allocate resources.

Crash Team

The Joplin Police Department Crash Team is made up of Certified Crash Reconstructionist's who have advanced training in documenting a crash using GPS points, measurements, and forensic evidence. This process helps to give closure to grieving families who have lost a loved one, secure evidence for criminal prosecution if warranted, and provide a complete and accurate record of the crash. In 2019, The Crash Team was called upon 31 times and investigated Seven fatal crashes that resulted in 11 deaths.



JOPLIN POLICE DEPARTMENT

HONOR • COURAGE • COMMITMENT • SERVICE

CHIEF OF POLICE  **SLOAN A. ROWLAND**

www.joplinpolice.org

SWAT Team

The Joplin Special Weapons and Tactics (SWAT) team has 27 members, who are highly trained and capable of handling high risk calls. The use of SWAT often brings a peaceful resolution to a very tense and dangerous situation.



The Joplin SWAT team was activated 26 times in 2019. The team was activated 21 times to serve high risk search warrants. The team was also called out 5 times for people that were barricaded in a residence for a variety of reasons. The team assisted other agencies and served several warrants for the Ozarks Drug Enforcement Team.



In 2019 Joplin SWAT hosted a Basic SWAT school and Basic Sniper school. This is the sixth year that Joplin SWAT has offered this training, which has been attended by departments from all across the region.

303 EAST 3RD ST • JOPLIN, MISSOURI • 417.623.3131

JOPLIN POLICE DEPARTMENT

HONOR • COURAGE • COMMITMENT • SERVICE

CHIEF OF POLICE  SLOAN A. ROWLAND

www.joplinpolice.org

Investigations Bureau

The Joplin Police Department Investigations Bureau is made up of a Captain, two Sergeants, three Corporals, and is authorized 20 Investigators, a civilian Investigative Assistant, and a civilian Evidence Technician. For the year 2019, the Investigations Bureau maintained an average of 13 full time Investigators. The Investigations Bureau is primarily responsible for the investigation of major felony crimes such as homicide, aggravated assault, sexual assault, burglary, robbery, forgery, and fraud. Investigators in this bureau also investigate child abuse and neglect hotline calls, vehicle thefts, thefts from vehicles, larcenies, domestic violence, and drug violations.

Joplin Police Detectives are members of the Tri-State Major Case Squad (TSMCS), with most carrying Jasper or Newton County Commissions. The TSMCS is comprised of numerous law enforcement investigators from agencies within Missouri, Oklahoma, and Kansas. With the unique demographics of the tri state area, the TSMCS, when activated allows Joplin/and or the surrounding agencies, access to a large number of highly skilled investigators who combine their efforts to solve major cases (typically homicides).

For the year 2019, no investigators were assigned to the Ozark's Drug Enforcement Team due to staffing. Two investigators are attached to the Southwest Missouri Cyber Crimes Task Force. Investigating complex major crimes requires the dedication, cooperation, and assistance of a variety of individuals and units. Investigators work closely with patrol officers to identify witnesses, preserve major crime scenes, gather critical information, and develop leads. They also work closely with officials from other agencies to solve crimes that cross jurisdictional lines. There were 9,851 cases assigned to the Investigation's Bureau during 2019, up from 9,155 in 2018. This amounted to 820 cases per month for the entire bureau and 63 cases per month per investigator.

Over the year 2019, the Joplin Police Department Investigations Bureau worked 2 homicide investigations. The Bureau submitted 941 felony probable cause statements, interviewed 454 suspects, and obtained 240 confessions. The Investigations Bureau responded to 128 child abuse hotline calls and were called in afterhours 472 times, a 9 percent increase from 2018.

JOPLIN POLICE DEPARTMENT

HONOR • COURAGE • COMMITMENT • SERVICE

CHIEF OF POLICE  **SLOAN A. ROWLAND**

www.joplinpolice.org

Evidence

2019 Evidence Facility Annual Report

Received items (JPD, Cyber Crimes, ODET) 9,610

Removed items (JPD, Cyber Crimes, ODET) 9,253

Federal Partners

The Joplin Police Department Investigations Bureau continues to work closely with its Federal partners in crime fighting, specifically addressing crimes that occur within the City limits of Joplin that have federal implications. Currently the Department has two detectives attached to the FBI Taskforce in Joplin, one detective commissioned through the U.S. Marshalls, one detective with the Department of Homeland Security (Customs) and one detective with an ATF commission. Due to the shortage of manpower, the officers assigned to task forces have had to work JPD cases as well as cases from their respective task force.

CYBER

The Joplin Police Department has 2 investigators assigned to the Southwest Missouri Cyber Crimes Task Force. During 2019 the local office of the task force was assigned 899 cases. The cases deal with possession of child pornography and child enticement (both state and federal cases) as well as cell phone examinations for other felony cases.



JOPLIN POLICE DEPARTMENT

HONOR • COURAGE • COMMITMENT • SERVICE

CHIEF OF POLICE  SLOAN A. ROWLAND

www.joplinpolice.org

Support Services

The Joplin Police Department Support Services Bureau consist of Emergency Communications, the Jail Division, School Resource Officer Program, Crime Free Multi- Housing and Crime Free Business Programs. The Bureau has several special programs, including National Night Out, Rise Above, Citizens Police Academy, Crossing Guards, Police Explorers, and The Sentinel Program.

When fully staffed, Support Services is comprised of one Captain, one Sergeant, a Corporal, and eight police officers, as well as the Jail and Communications staff.

Joplin City Jail

The Joplin City Jail has a total of 19 full and part-time employees to manage the 64-bed facility. The Joplin City Jail continues to operate the electronic monitoring program which allows inmates to serve their jail time while on house arrest. To participate in the program, the inmate must pay a daily monitoring fee. The jail uses GPS monitoring which allows for more participants and helps reduce the average daily population in the jail resulting in reduced cost for housing inmates. The jail also utilizes the Huber Work Release program, which allows inmates sentenced to serve jail days to make application to receive a furlough to go out and search for a job, as well as maintain employment while serving jail time.

Emergency Communications

The Joplin Emergency Communications Center (ECC) handles Police, Fire, and EMS services for the City of Joplin, and Police services for the City of Duquesne. In addition, they assist the Health Department (Animal Control) with call taking/dispatching services on nights and weekends, along with MSSU Campus Police on nights and weekends. When fully staffed the center employs 20 full-time public safety communications personnel which includes one manager, three supervisors and sixteen dispatchers.

Over the course of 2019, the Joplin Emergency Communications Center answered 122,514 calls for service, which included 38,895 9-1-1 calls. Of those calls for service 85,083 were for the Joplin Police Department, 9,630 were for the Joplin Fire

303 EAST 3RD ST • JOPLIN, MISSOURI • 417.623.3131

JOPLIN POLICE DEPARTMENT

HONOR • COURAGE • COMMITMENT • SERVICE

CHIEF OF POLICE  **SLOAN A. ROWLAND**

www.joplinpolice.org

Department, 3,687 for Duquesne Police Department, with the remaining calls for Animal Control, EMS, and MSSU Police.

The Joplin ECC partnered this year with RapidSOS to help with location accuracy during 9-1-1 calls. The RapidSOS portal works with location technology located in iPhone and Android devices, as well as emergency data from such apps as Uber, wearables, connected phones and cars. This technology provides a much more accurate location for those dialing 9-1-1 within the city limits of Joplin, providing our dispatchers with additional ways to receive the location of an emergency, especially if the caller cannot talk, or does not know their location. Our center has also partnered with MODOT and is now able to access traffic cameras to assist with accidents in the city and on I-44.

The ECC also began community outreach programs to share information about 9-1-1 and what the public needs to know. We spoke to community groups, had a 9-1-1 Education table at National Night Out, and presented at the Citizens Police Academy. We plan to expand this program into 2020.

We are proud to assist the public safety responders, and our citizens. As our emblem proudly states. "Every minute, every day, always there."



303 EAST 3RD ST • JOPLIN, MISSOURI • 417.623.3131

JOPLIN POLICE DEPARTMENT

HONOR • COURAGE • COMMITMENT • SERVICE

CHIEF OF POLICE  **SLOAN A. ROWLAND**

www.joplinpolice.org

Professional Standards Bureau

The Professional Standards Bureau is comprised of 1 Captain, 1 Sergeant, 1 officer, 4 civilian clerks and 1 crime analyst. The Sergeant and Officer stay busy at the Joplin Public Safety Training Center hosting training for officers and holding in-house training for new recruits.

In 2019 the Public Safety Training Facility hosted 26 classes and provided 482 hours of training to outside agencies. They also provided 5,689 hours of training to Joplin Police Officers.

The crime analyst works side by side with the detective division gathering and disseminating information department wide for intelligence led policing efforts to combat crime.



The four records clerks work together to answer phones, enter lobby calls, answer general questions, data entry, filing and fulfilling other requests for information.

End